



# Update on research, publications and guidance

Trevor Howard

Senior Advisor (Land and Contamination Management)

# What on earth are you doing?

Trevor Howard

Senior Advisor (Land and Contamination Management)

# Contents

- ➔ Funded programmes
- ➔ Part 2A
- ➔ Planning
- ➔ Permitting
- ➔ Guidance

# Funded programmes

➔ Minewaters

➔ Waste to land

# Abandoned Mines

- ➔ Coal Authority and Defra Water Quality
- ➔ Research with Newcastle University
- ➔ Prioritising sites
- ➔ Treatment schemes



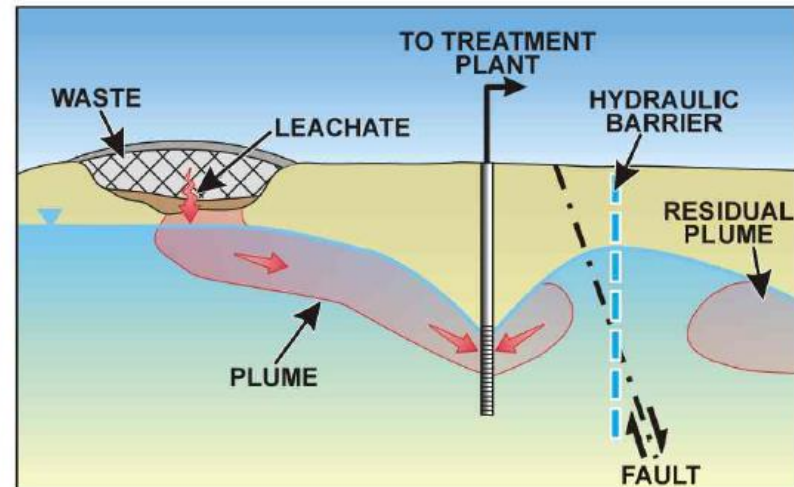
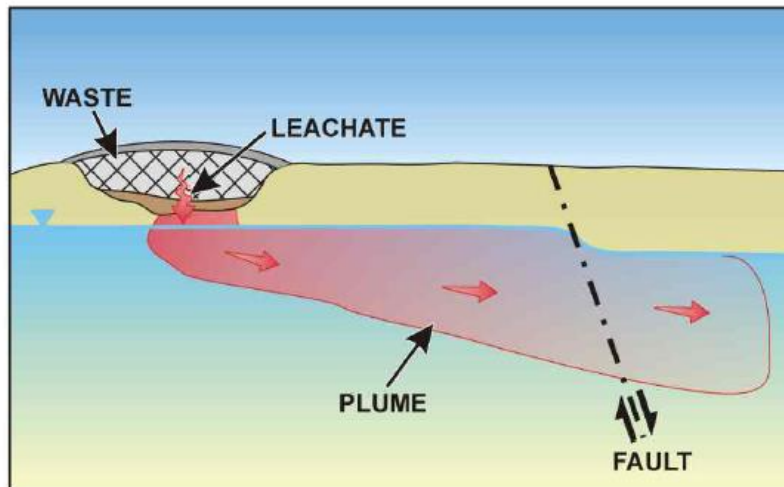
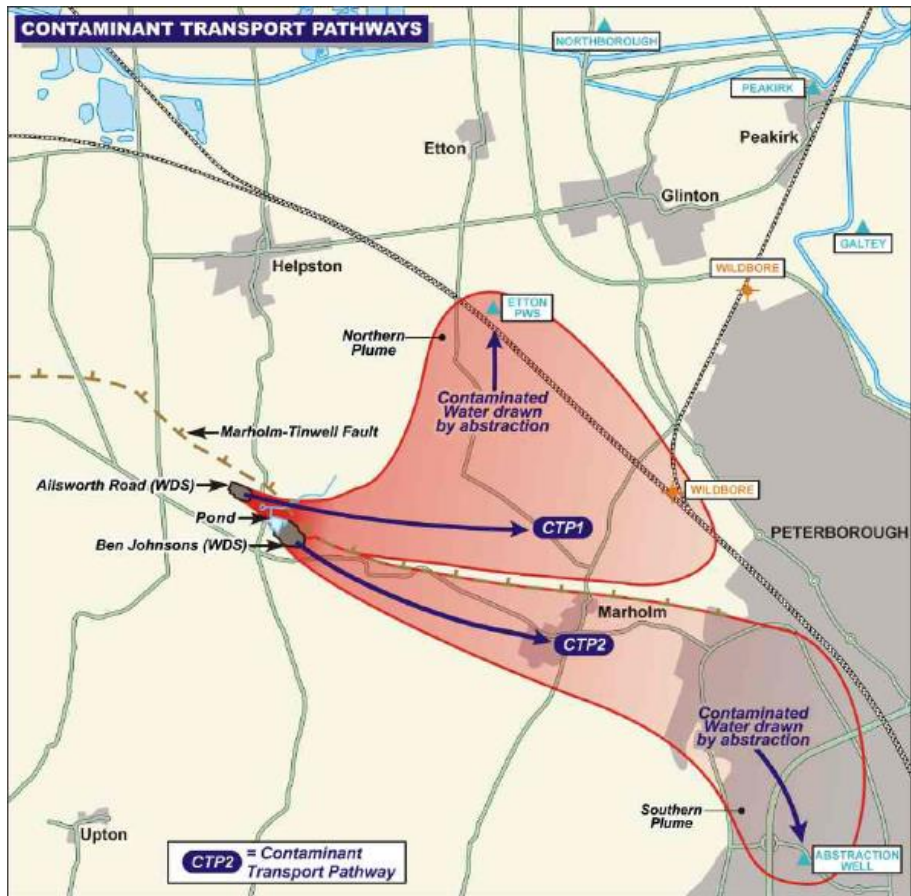
# Saltburn Gill





# Part 2A

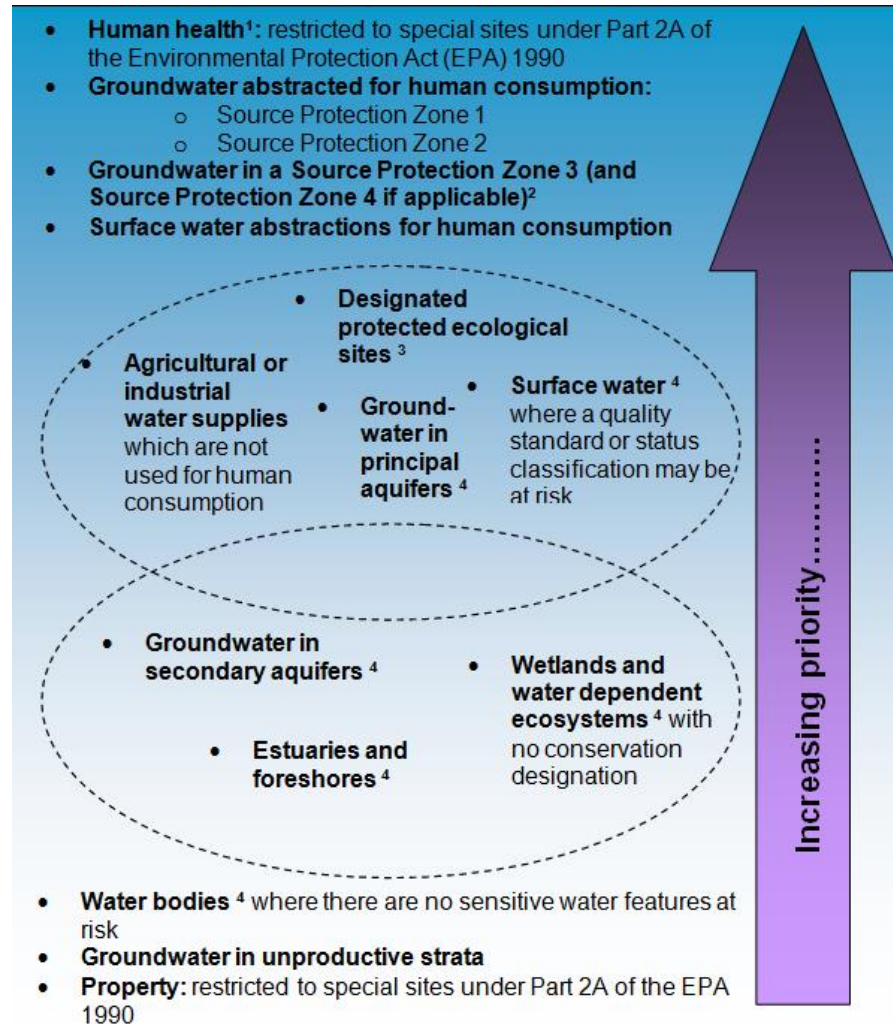
- ➔ Finishing site inspections
- ➔ Managing orphan sites
- ➔ 54 special sites
- ➔ Some are long term problems e.g. Helpston



# Land contamination and planning

- ➔ One of our largest areas of work
- ➔ Brownfield agenda growing
- ➔ Prioritised input
- ➔ Trialling a consistent national approach

# Policy on prioritisation (2008)



# Draft consultation tool

➔ Is it a special site?

➔ If not:

| Site Risk                                      | Within 50 metres of any well, spring or borehole used to supply water for human consumption | SPZ1    | SPZ2    | SPZ3               | Principal Aquifer  | Secondary Aquifer A | Secondary Aquifer B - Area action required | Safeguard Zone - Area action required |
|--|---|---------|---------|--------------------|--------------------|---------------------|--|---------------------------------------|
| <u>High polluting potential previous use</u>   | Consult   | Consult | Consult | Consult            | Consult            | Consult - optional  | Consult - optional                         | Consult                               |
| <u>Medium polluting potential previous use</u> | Consult   | Consult | Consult | Consult - optional | Consult - optional | Consult - optional  | Consult - optional                         | Consult                               |

➔ Also considers development or permit type and groundwater risk

# Planning example

- ⇒ 531,500 m<sup>3</sup> tested
- ⇒ 53,408 m<sup>3</sup> soil treated and re-used
- ⇒ 783 m<sup>3</sup> disposed of
- ⇒ 643 m<sup>3</sup> groundwater treated for disposal



# Permitting

- ➔ Site condition reports
- ➔ Baseline reports
- ➔ Periodic monitoring

# Guidance

- ➔ Smarter guidance (Smarter Environmental Regulation Review (SERR))
- ➔ CLR11 summary document
- ➔ GP3 groundwater document
- ➔ H1 and H5 for Environmental Permitting
- ➔ Guiding Principles for Land Contamination

[www.claire.co.uk/wall](http://www.claire.co.uk/wall)



# Thanks for listening!

[trevor.howard@environment-agency.gov.uk](mailto:trevor.howard@environment-agency.gov.uk)