



Environment
Agency

ROYAL SOCIETY OF CHEMISTRY - TOXICOLOGY GROUP and The Society of Brownfield Risk Assessment (SoBRA)

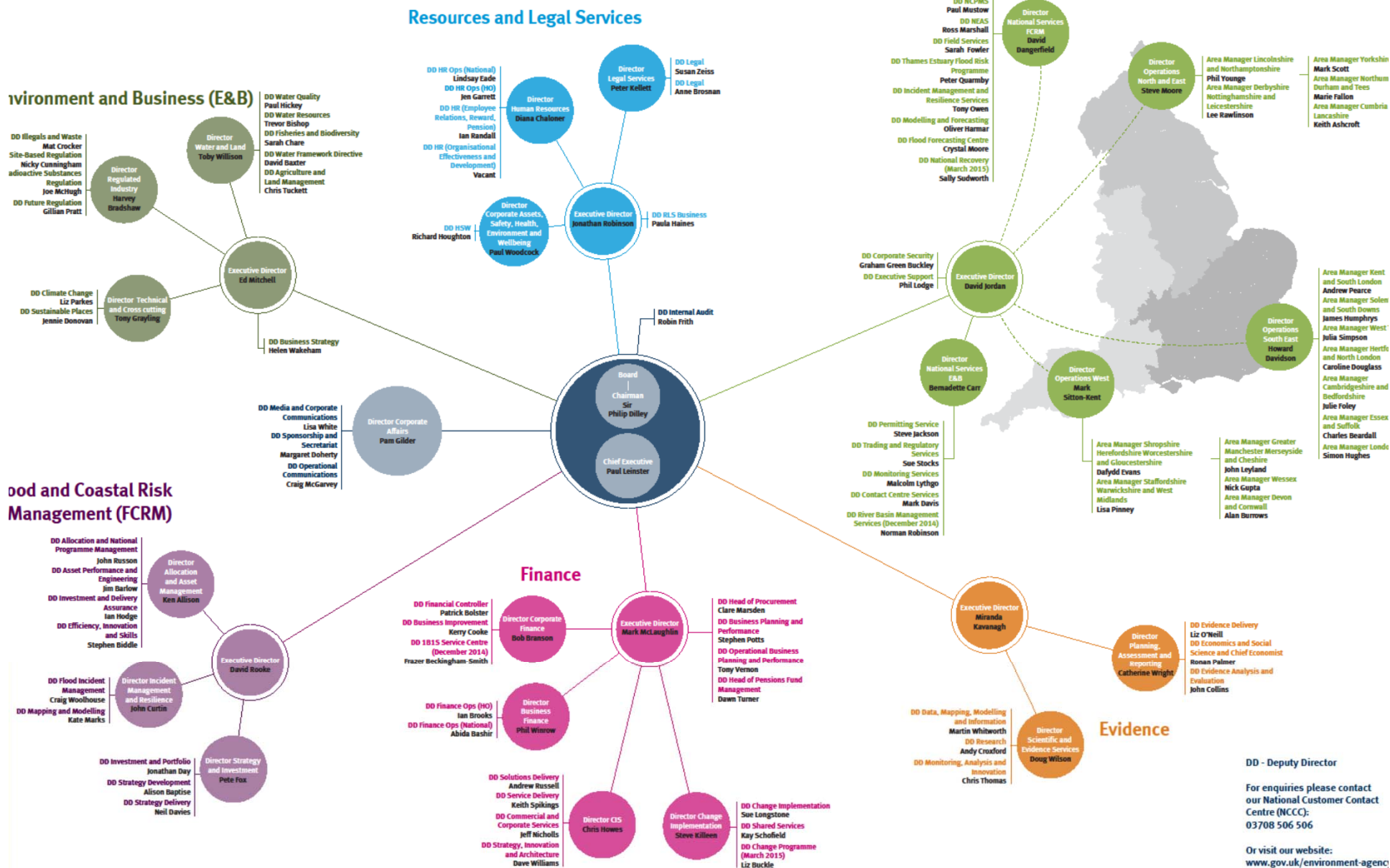
**Update on publications & guidance from the
Environment Agency**

Theresa Cory

Groundwater and Contaminated Land Technical Specialist Herts
& North London Area

16 December 2014

Creating a better place



DD - Deputy Director

For enquiries please contact our National Customer Contact Centre (NCCC): 03708 506 506

Or visit our website: www.gov.uk/environment-agency

Issue date September 2014

New Environment Agency structures

- ➔ Regional tier removed
- ➔ 16 area GWCL teams
- ➔ Some also cover hydrology or landfill geotechnical
- ➔ Two new National teams from December:
 - ➔ Groundwater
 - ➔ Land Contamination Management



Smarter environment regulation review (SERR)

- ➔ An outcome of the Red Tape Challenge
- ➔ Defra's Smarter Guidance and Data initiative aims to:
 - ➔ “make it simpler, quicker and clearer for businesses and others to understand and comply with their obligations”
 - ➔ “reduce the time needed for new businesses to find out about their obligations by at least 80%”
- ➔ Very supportive of guidance from industry or groups like SoBRA



- ➔ ‘Development’ theme includes contaminated land guidance
- ➔ Current consultation closed 12 December 2014
 - ➔ Red = move to National archive - Around 30 red – including the “old approach TOX reports
 - ➔ Amber = rewrite to make it clearer - around 140 docs – including GPLCs, SGVs, but If not possible (or no resources), most likely archived
 - ➔ Green = kept - 2 green: PPGs and new groundwater & contaminated land guidance notes: not yet available.

Reforming
Development
Guidance
Plans for Future
Content
List of Existing
Guidance

List of Existing Guidance

This is a list of current guidance documents and web content, with details of what we are intending to do with each of these. Current documents will either be:

- moved to the national archives website (red)
- rewritten to make it clearer and current version archived (amber)
- kept (green)

http://www.environment-agency.gov.uk/research/plans	Land contamination guidance	
http://publications.environment-agency.gov.uk/pdf/SCHO080-e-e.pdf	Model procedures for the management of contaminated land	

Current EA Consultation

- ➔ River Basin Management Plan (RBMP) consultation from 22 September 2014 until March 2015.
- ➔ Tell us your views on how to address the challenges facing our river basins.

Water for life and livelihoods

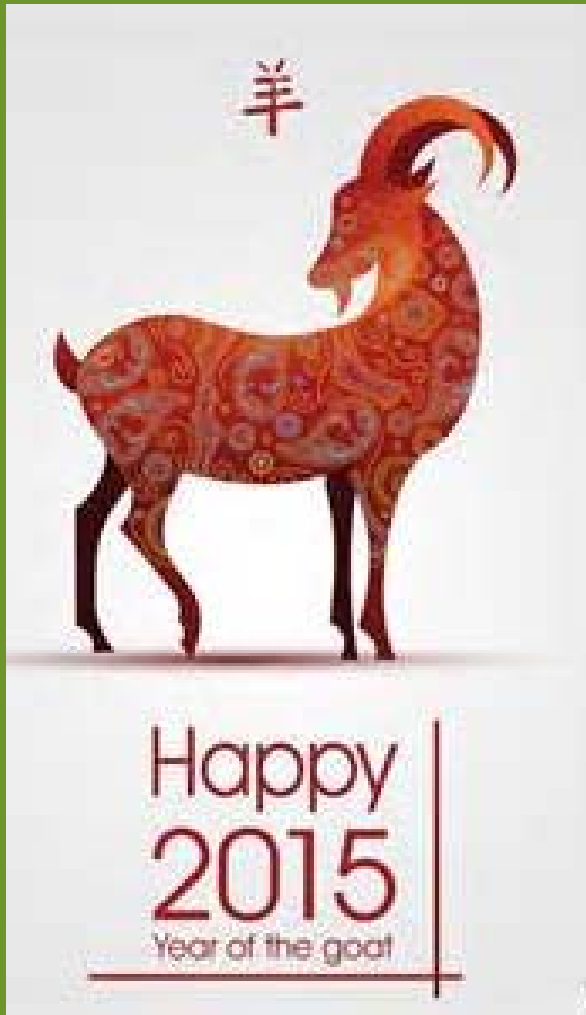
River Basin Management Plan Thames River Basin District



Small Sewage Discharges In England

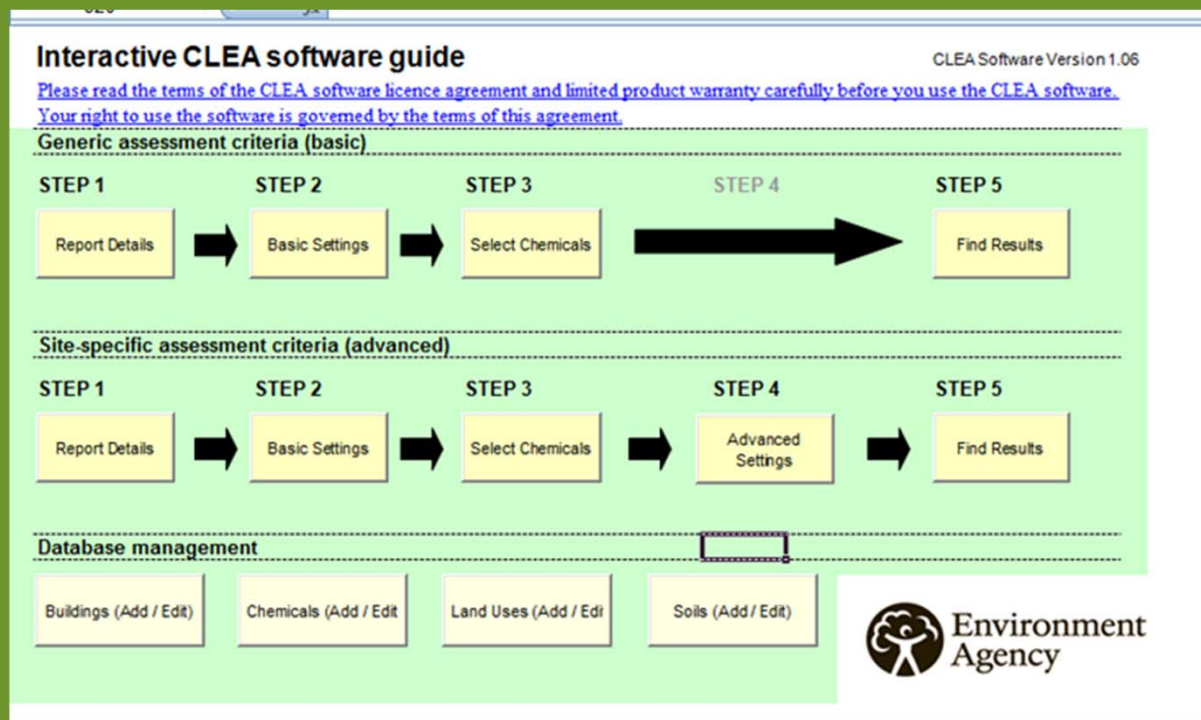


- ➔ Amended EPR Regulations laid before Parliament 27th October 2014
- ➔ New regulatory framework which will be introduced from 1 January 2015
- ➔ General binding rules (GBRs) instead of registration or bespoke EPR permit required (if GBR conditions not met)
- ➔ Guidance available on Gov.uk.



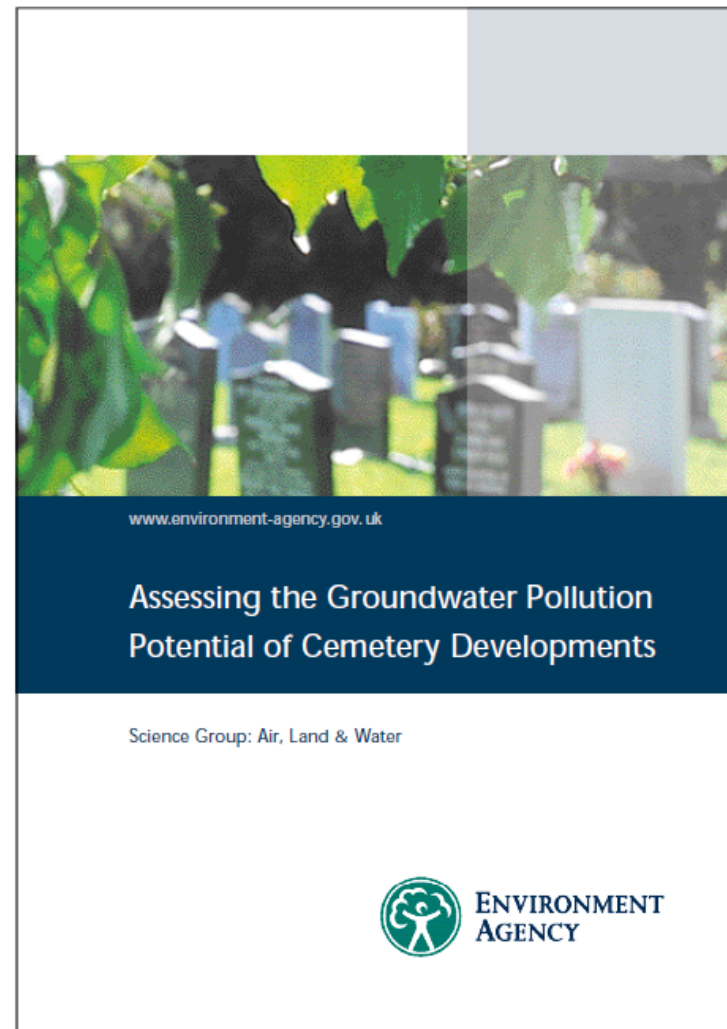
Heads up for 2015

CLEA



- ➔ CLEA v1.07 with C4SLs preloaded will be available.
- ➔ Worksheets will be protected but can be unlocked without a password.
- ➔ In accordance with the Open Data policy and licensing conditions, third parties need to be made aware if there are any changes to the worksheets.
- ➔ For IPR queries please contact Ian Martin, Environment Agency

- ➔ Revised guidance due late spring.
- ➔ The EA stance has not changed.
- ➔ Revised guidance is to make our position clearer, remove any contradictions and bring the document up to date, with better links to GP3 and Environment Agency (2011). Horizontal Guidance Note H1, Environmental Risk Assessment, Annex J – Groundwater.



Part 2A guidance on significant pollution of water



- Statutory guidance is the main guidance
- Development of our supplementary guidance on hold until New Year
- Influenced by progress with other projects:
 - Revision of the JAGDAG “hazardous substances” assessment method
 - New approach to deriving minimum reporting values (MRV)
 - Consultation mid-2015
- Stakeholder input will be part of its development

A Quality Management System for Land Contamination Management

Land Forum

Matthew Whitehead

Senior Advisor - (Contaminated Land Remediation)

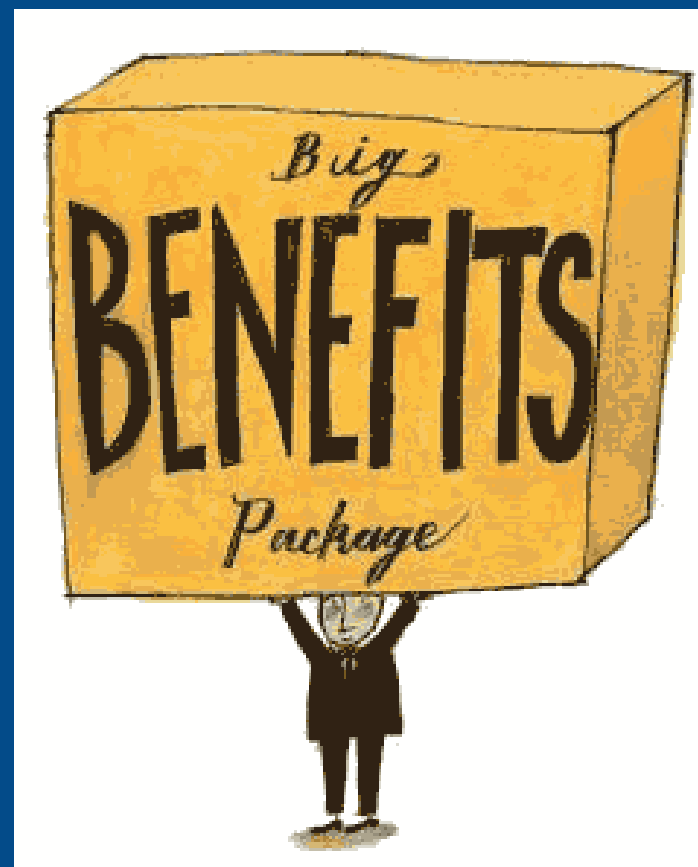
E&B - Land & Contamination Management

Purpose

- ➔ To improve the quality of land contamination work delivered by the Environment Industry under Town & Country Planning whereby regulators can rely upon conclusions and recommendations.
- ➔ A voluntary scheme where any administrative burden is clearly outweighed by the benefits

Value of the Scheme

- ➔ For the Developer compliance with legislative requirements and realisation of cost savings linked to administration and delays.
- ➔ For the Regulators realisation of cost savings in administration and quality assurance of Development submissions.
- ➔ For the Public a cleaner safer environment



Outline of the Scheme



- The proposals revolve around the concept that a suitably qualified person should assure the quality of a product by:
 - Assessing the capability of the Team
 - Ensuring compliance with good practice and legal requirements
 - Auditing the content to ensure accuracy and reasonableness of conclusions and recommendations

Links with SoBRA

- ➔ As part of the Land Forum, SoBRA are instrumental in taking this initiative forward.
- ➔ SoBRA have a key role to play in establishing the capabilities required for risk assessment elements of any work.
- ➔ SoBRA initiatives such as registers of practitioners will greatly assist in assuring the quality of the individuals operating as risk assessors under the scheme

Happy Christmas

from the Environment Agency

Medmerry flood risk management scheme –
protecting homes and wildlife

Winner of the 2014 Prime Minister's
Better Public Building Award

